



***tejraj***<sup>®</sup>

You've arrived.



  
**tej elevia**  
2 & 3 BHK LUXURY CONDOS  
BANER

## Life At Its Best!

Step into a living experience that's second to none. Step into the mesmerizing world of **Tej Elevia!** Located in the posh yet serene locales of Baner, **Tej Elevia** caters to those with a flair for the extravagant. With unmatched features, uncompromised finishes, and intricate planning, **Tej Elevia** is where every inch of space is meticulously crafted with care, making you feel that **you've arrived.**

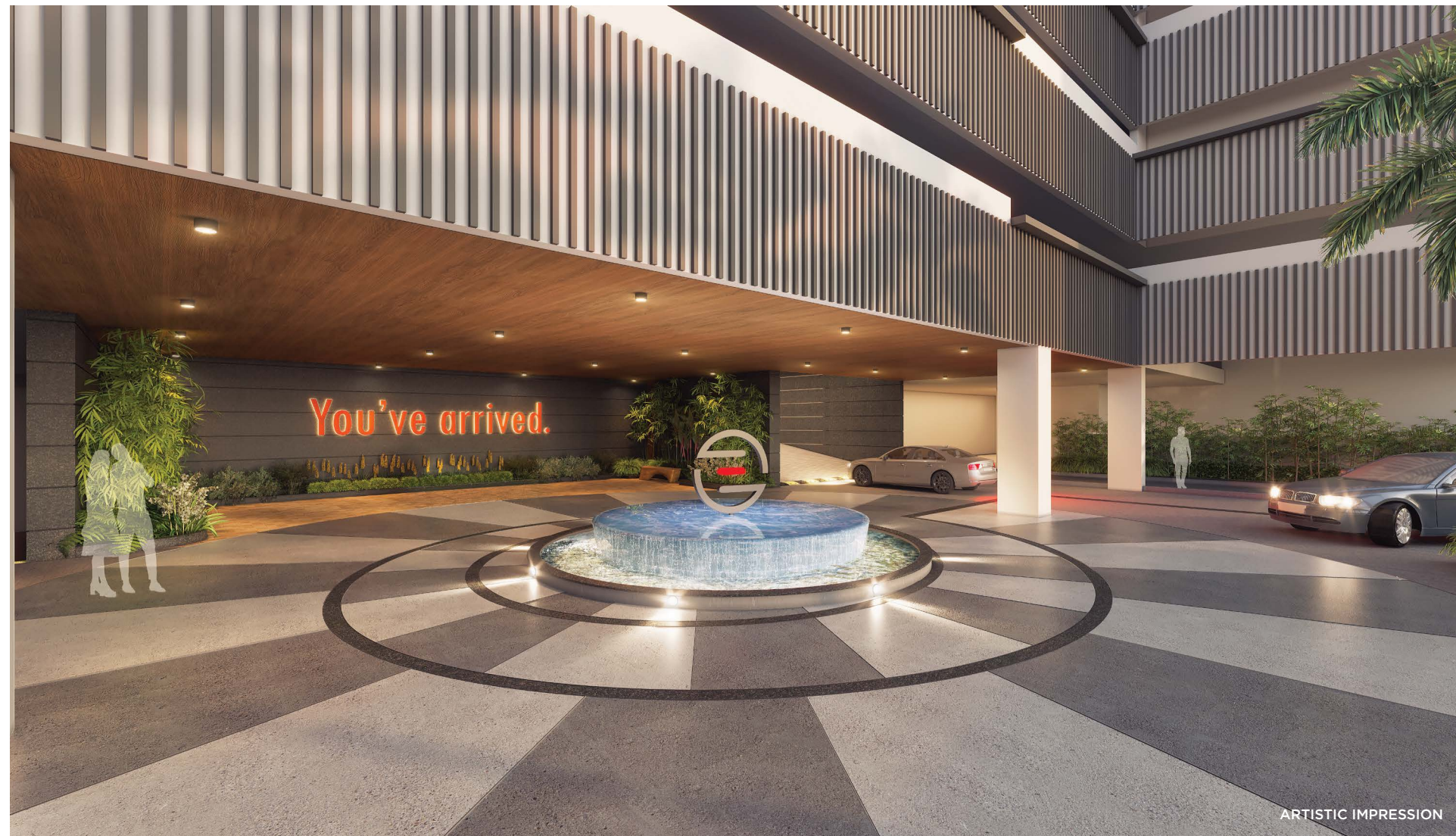


Grandeur At Its Best!





**An Iconic Welcome!**

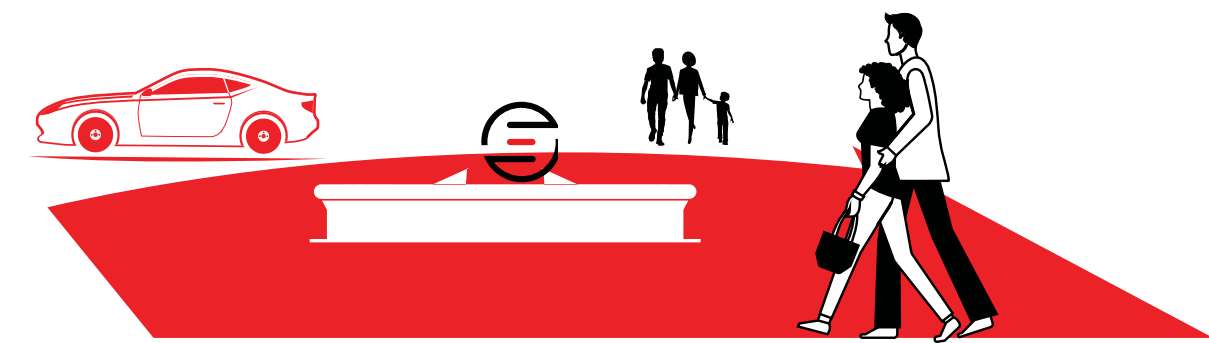


**MESMERISING DROP-OFF AREA**



**MAJESTIC LOBBY**

Once you take the last turn off the main road, and enter the world of **Tej Elevia**, you get the distinct feeling of being transported into another world. The designer entrance lounge and reception area sets the tone for the grandeur that **Tej Elevia** has to offer. At **Tej Elevia** we have ensured that every step you take will make you feel that you have arrived.





Privacy At Its Best!





ARTISTIC IMPRESSION



ARTISTIC IMPRESSION



ARTISTIC IMPRESSION



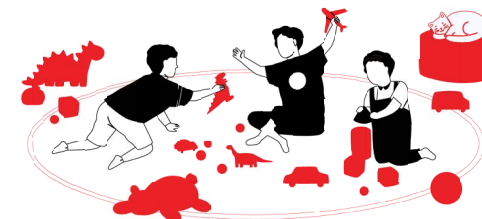
ARTISTIC IMPRESSION



Podium Deck



- Kids Pool
- Swimming Pool
- Co-working Zone
- Senior Citizen's Zone



- Crèche
- Outdoor Children's Play Area
- Indoor Children's Play Area
- Multipurpose Lawn



Sundowners At Its Best



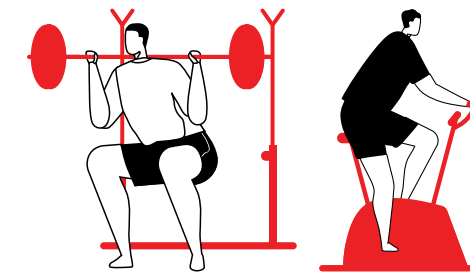
ARTISTIC IMPRESSION



## Sky Deck



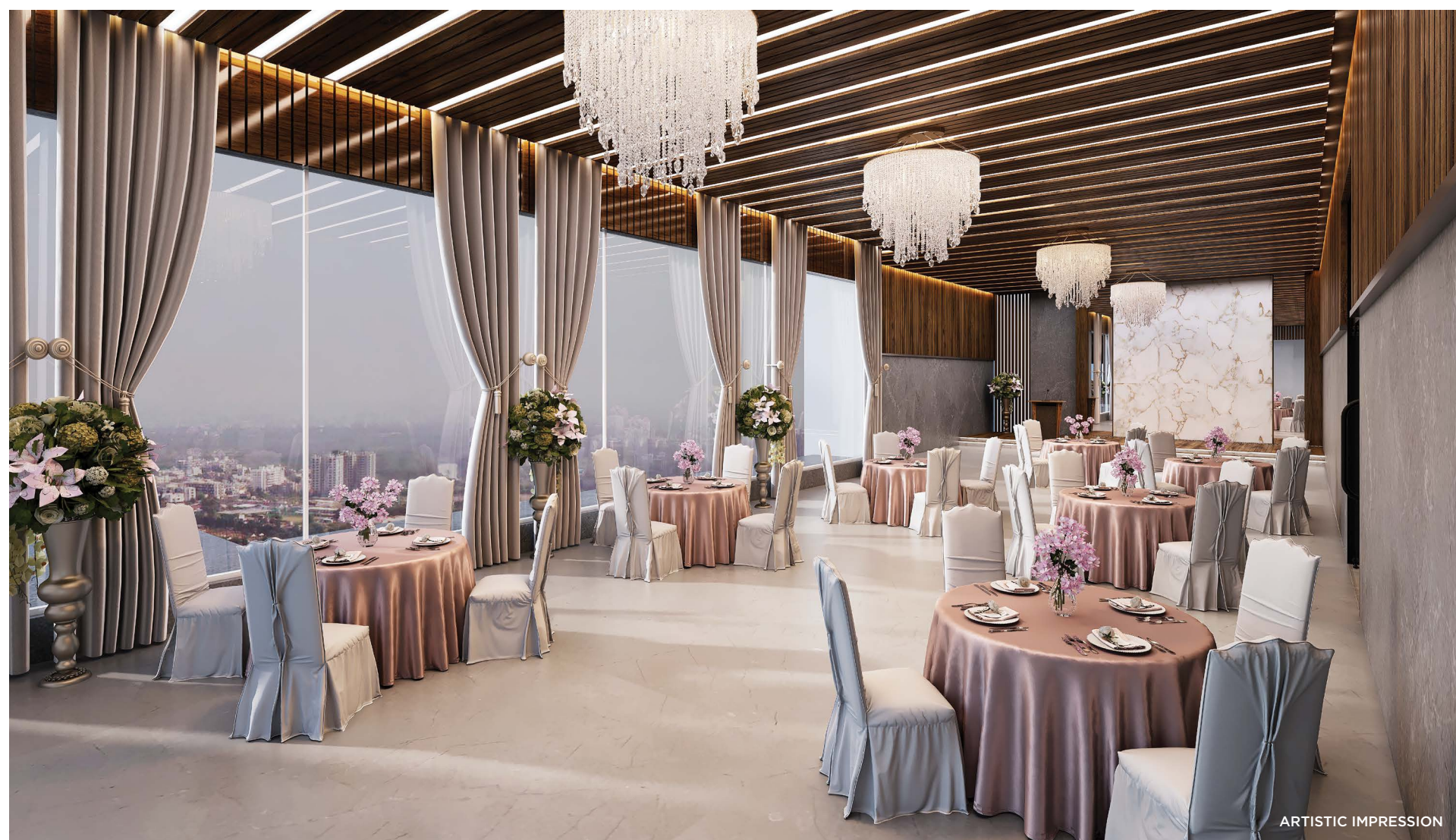
ARTISTIC IMPRESSION



- Well-equipped Gym
- Multipurpose Hall with Pantry for society functions and for Yoga, Indoor Games and Other Activities
- Ample Outdoor Seating Spaces



- Wi-Fi enabled Sky Lounge on Top Terrace
- Mini Multipurpose Court on Top Terrace
- Sky Katta / Seating
- Sky Walk

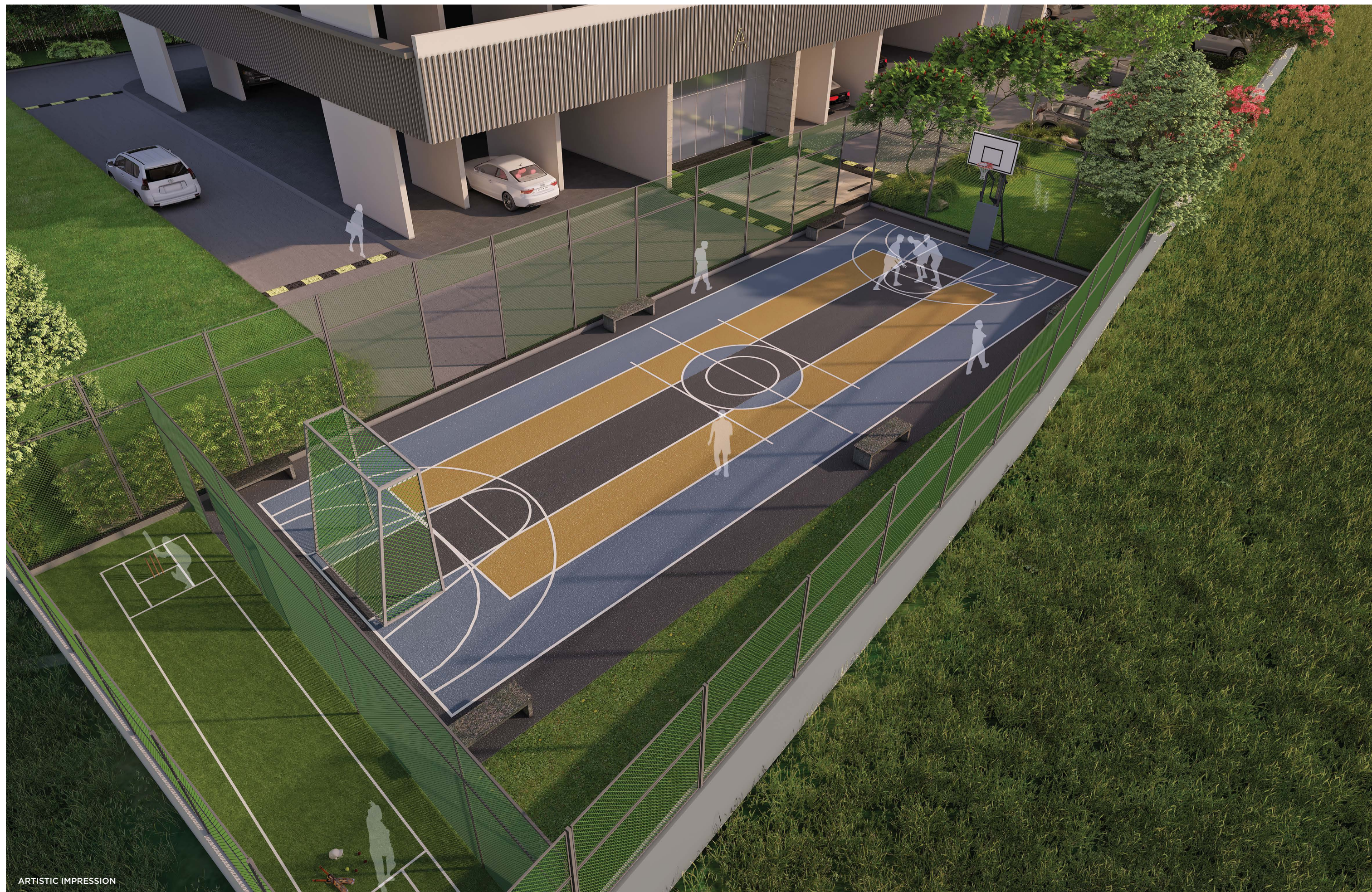


ARTISTIC IMPRESSION



ARTISTIC IMPRESSION





## Common Facilities

- Well-designed Entrance Lounge
- Reception Area
- 3 High-speed Elevators
- Power backup for Parking Area, Staircase, Lift, Common Lighting
- Rain Water Harvesting System
- Organic Waste Converter
- Solar Water Heating System
- Lightning Arrestor
- MDU, Provision for D2H Connection
- Wi-Fi enabled Podium Deck and Sky Deck
- Society Office Space
- Pets Zone
- Common Toilets for Maids, Drivers, Security etc
- Perennial Garden with Drip Irrigation System





## Finishes

### STRUCTURE

- Earthquake Resistant RCC Structure

### WALLS

- Autoclaved Aerated Block Masonry (AAC)

### EXTERNAL TEXTURE & INTERNAL FINISHES

- Texture finish on External Walls
- Gypsum-finished Internal Walls

### FLOORING

- Vitrified Tiles in All Rooms
- Designer Tile Dado in Toilet up to Lintel Level
- Anti-skid Ceramic Tiles in Toilets and Terrace Flooring
- Toilet Window & Door Frame in Granite
- Chequered Tile for Covered Parking
- Paving Blocks for Drive-way Area

### DOOR

- Main Door with Digital Lock
- Laminate-finished Internal Doors
- 3 Track Aluminum Door for Sit-out / Balcony
- Laminate-finished Toilet Door with Granite Door Frame

### WINDOWS

- 3 Track Powder Coated Aluminum Windows with Mosquito Mesh Shutter
- MS-Railing for Windows up to 1.2 Meter Height
- Granite Sill for Windows

### KITCHEN

- Kitchen Platform with Stainless-Steel Sinks
- Provision for Dishwasher in Dry Balcony
- Dado up to Ceiling Level
- Gas Leak Detector
- Provision for Water Purifier

### BATHROOM AND TOILETS

- American Standard / Toto / equivalent Sanitary Wares
- Grohe / equivalent make CP Fittings
- Glass partition for Shower Area in One Master Toilet
- Provision for Exhaust Fan for Toilets
- Wash Basin
- False Ceiling in All Toilet
- Wall-hung Commode

### SOLAR WATER

- Solar Hot Water in One Master Bedroom

### POWER BACKUP

- Provision for Inverter Power Backup for Individual Flat
- DG Backup for Light and Fan Points

### INT. ELECTRIFICATION

- Concealed Electrification with Adequate Light & Fan Points in All Rooms with Legrand / Schneider / equivalent Modular Switches
- TV Point in Living Room & in All Bedrooms
- Telephone point in Living Room
- Provision for Air-conditioner in Master Bedrooms
- Provision for Washing Machine, Refrigerator, Water Purifier & Boiler
- Earth Leakage Circuit Breaker in Each Flat
- Provision for Broadband Connection
- Provision for DTH

### PAINT

- Plastic / Acrylic Emulsion Paint for Internal Walls and Ceilings
- Acrylic Paint for External Walls
- Oil Paint for MS-Railing

### PLUMBING

- Concealed Plumbing & Drainage System with Good Quality Pipes / Slung Drainage System
- Provision for Washing Machine in Dry Balcony
- Provision for Boiler in All Bathrooms

### EXT. ELECTRIFICATION

- Adequate LED lights in Staircase, Passage & Parking
- Separate MSEDCL Meter for Common Amenities

### SECURITY SYSTEM

- Boom Barrier at Entrance Gate
- Security Cabin with Monitoring System
- CCTV for Entire Campus and Entrance Lobbies
- CCTV Surveillance for Crèche, Kids Play Area with Online Access to Parents.
- Video Door Phone integrated with Intrusion Alarm System Connected to Security Cabin.
- Video Door Phone Permitted Access for Visitors
- Panic Button with Console at Security Cabin
- Smoke Detector
- Fire Alarm
- Smoke-Leak Detector
- High-Speed Elevators with Auto Rescue Device (ARD)
- Elegant Compound
- Drop-off Space to Building

### COMMON LIGHTING

- Energy Efficient LED Common Lighting

### FIRE-FIGHTING

- Well-equipped Fire-Fighting System as per PMC Norms
- Sufficient Water Storage for Fire-Fighting
- Fire-Fighting System with Fire Staircase & Fire Hose Cabinets
- Water-Sprinkler System in Parking

### PARKING

- Sufficient Car Parking
- Common Electric Vehicle Charging Point
- Space for Visitors Parking
- Well-designed Parking Levels

### DRINKING WATER

- Water Softener Plant for Treating Borewell Water to Augment Domestic Water Capacity
- Separate Storage for Drinking Water
- Separate Supply System for Drinking Water in Kitchen



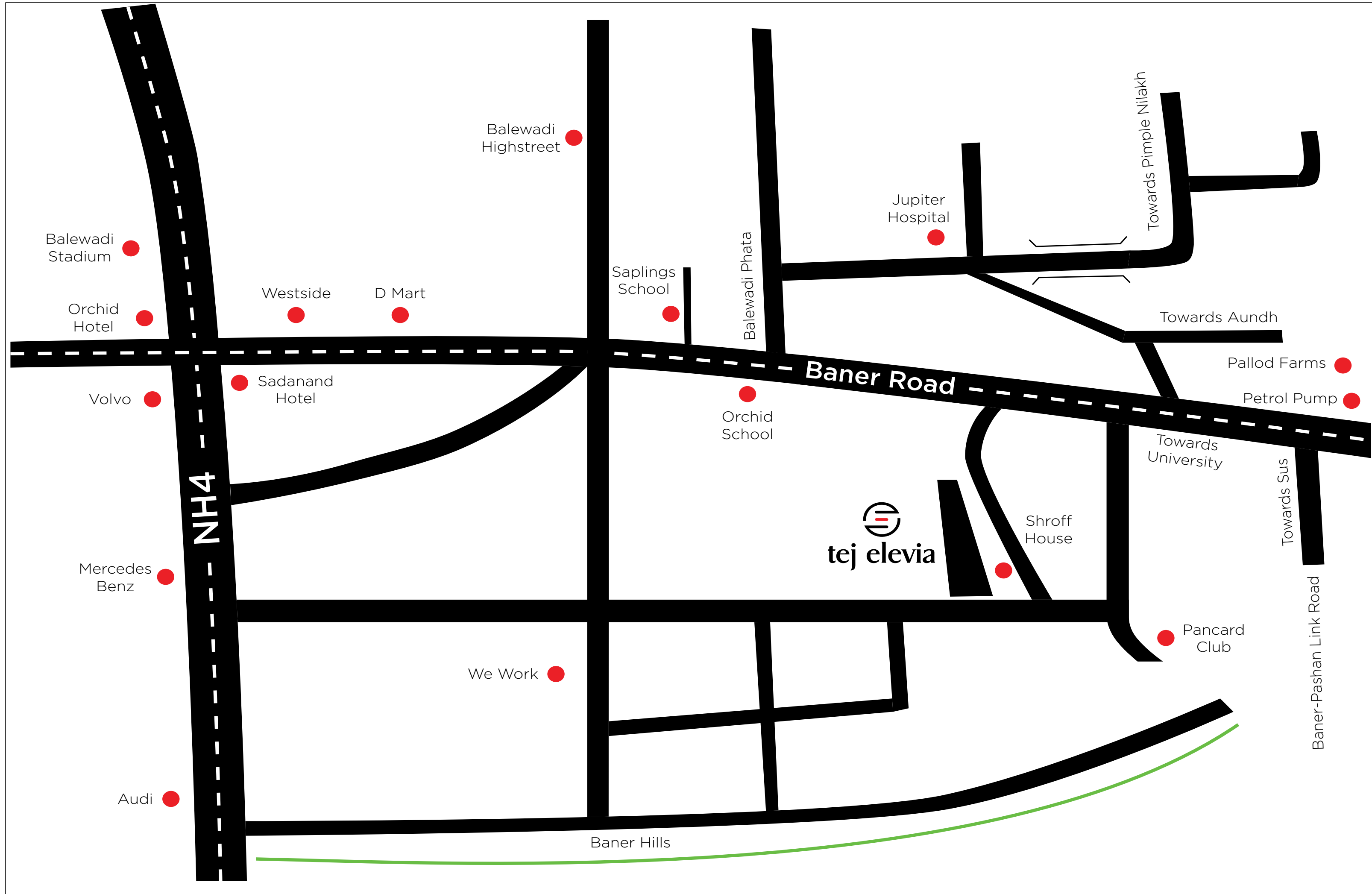


Luxury At Its Best!





# Baner At Its Best!



### Entertainment & Leisure

- Balewadi Highstreet - 2.3 Kms
- Orchid Hotel - 3.4 Kms
- Balewadi Stadium - 4 Kms
- Marriott Hinjewadi - 6.9 Kms
- E Square Multiplex - 7.5 Kms

### Shopping

- DMart - 2 Kms
- Westside - 2.5 Kms
- Westend Mall - 3.4 Kms
- Pavillion Mall - 6.6 Kms
- Xion Mall - 7 Kms

### Schools & Colleges

- The Orchid School - 1 Km
- Saplings School - 1.5 Kms
- DAV Public School - 3 Kms
- MITCON Institute - 3.5 Kms
- Vibgyor School - 3.9 Kms
- Pune University - 5.7 Kms
- Loyola School - 5.8 Km
- Indira Institute - 8.1 Kms
- Symbiosis School - 8.6 Kms

### Hospitals

- Jupiter Hospital - 1.5 Kms
- Medipoint Hospital - 2.5 Kms
- Lifeline Hospital - 3.3 Kms
- Aditya Birla Hospital - 11.3 Kms

2 BHK - TYPE 1



3 BHK - TYPE 1



2 BHK - TYPE 2



3 BHK - TYPE 2





ARTISTIC IMPRESSION



**26+**  
Years of  
Excellence

**17+**  
Landmarks  
Delivered

**22.5 Lacs+**  
Sq.Ft. of Environment  
Friendly Spaces Delivered

**15 Lacs+**  
Sq.Ft. Under  
Development

---

**COMPLETED LANDMARKS**

- |                                 |                                    |                                       |                                   |  |
|---------------------------------|------------------------------------|---------------------------------------|-----------------------------------|--|
| <b>MALIKA</b><br>ICS Colony     | <b>MINERVA</b><br>Bhosale Nagar    | <b>BONITA</b><br>Shivaji Nagar        | <b>TEJOVALAY</b><br>Shivaji Nagar | <b>DIVYATEJ</b><br>Senapati Bapat Road |
| <b>MADHUPUSHPA</b><br>Wakad     | <b>TEJ CREST</b><br>Shivaji Nagar  | <b>ARISTA</b><br>Warje                | <b>TEJ AURA</b><br>Happy Colony   | <b>TEJ PEARL</b><br>Shivaji Nagar      |
| <b>HARI TEJ</b><br>Model Colony | <b>TEJASWA</b><br>Shivaji Nagar    | <b>TEJ GLORY</b><br>Bhandarkar Road   | <b>TEJ BLISS</b><br>Model Colony  |  |
|                                 | <b>RAMA RATNA</b><br>Shivaji Nagar | <b>FORTUNE PLAZA</b><br>Shivaji Nagar |                                   |  |
-

Sales Lounge

Tej Elevia, Survey no. 72/4, 73, 74+75/2/1 Plot No. 31, 32, Nr. Shroff House, Baner, Pune-411045.

Corporate Address

102, Bonita, V. Deshmukh Path, Off Ghole Road, Shivajinagar, Pune-411005

**9970 16 46 46 | tejraj.in**

 <https://maharera.mahaonline.gov.in> | MAHARERA Registration no.:- P52100018143