

THE KOHINOOR OF DHANORI

2 & 3 BHK

 **KOHINOOR
VIVA CITY**

KOHINOOR GROUP:

A LEGACY OF 38 YEARS

Kohinoor Group has proudly stood tall as a leader in Pune's real estate development sector for 38 years. When the group commenced operations in 1983 under the able leadership of its Chairman & Managing Director, Mr. Krishnakumar Goyal, we started a cement trading business.

Over the years, Kohinoor carved a name for itself as a solid, trustworthy construction brand. Today, the group has developed and delivered over 6.5 million sq. ft. across Pune

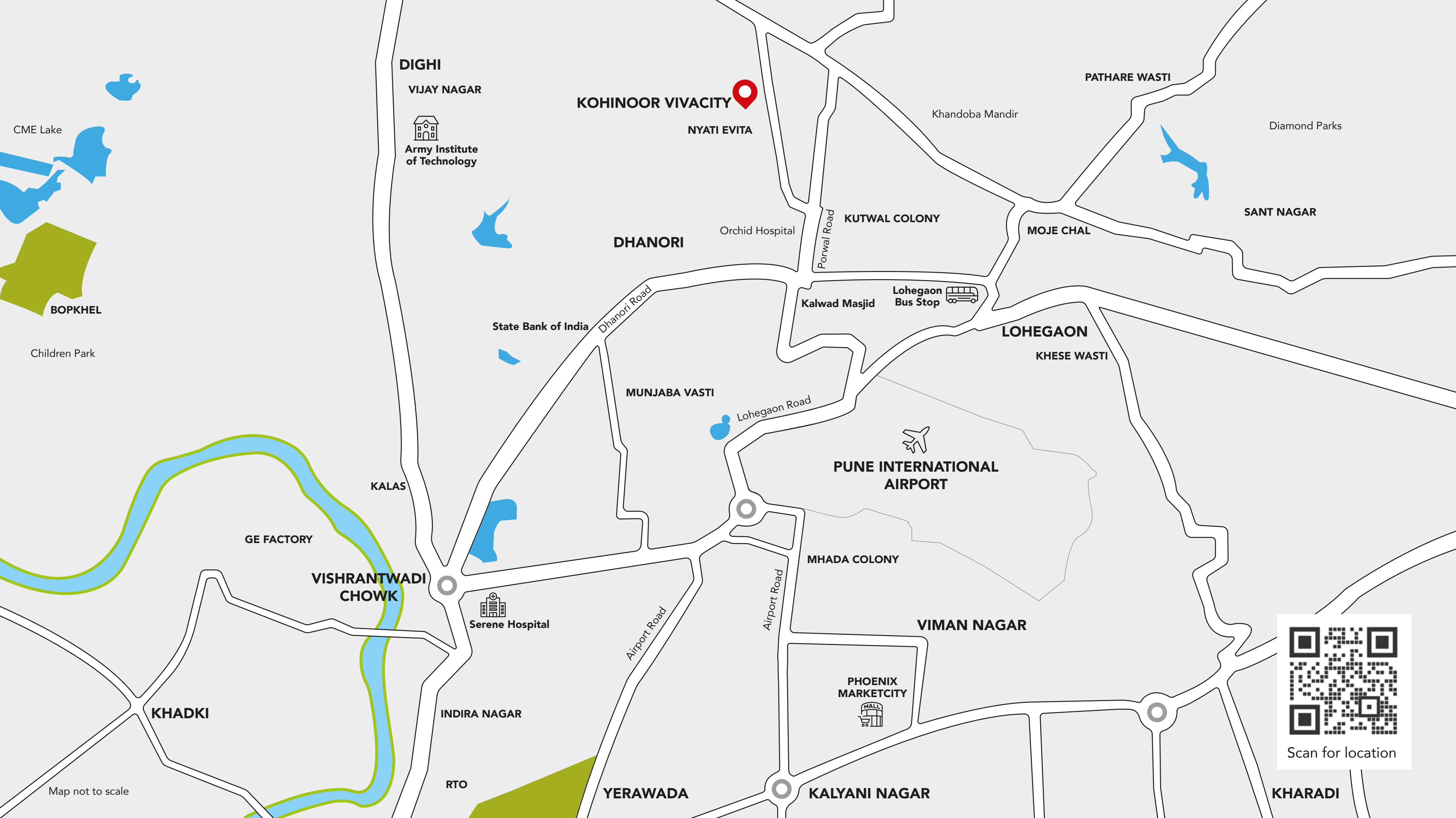
and has over 3 million sq. ft. of spaces currently under development. We also have diversified interests in other verticals like manufacturing, logistics and services.

In the last decade, every project that Kohinoor Group has undertaken has been planned entirely before starting any construction work. Be it residential properties or commercial projects, we always think about the needs and wants of our customers before taking any decisions.

DHANORI

THE NEW GEM IN NORTH-EASTERN PUNE

- Dhanori is one of the fastest growing suburbs which is blessed with multiple advantages.
- One of the most sought-after locations, Dhanori is in proximity to established residential hubs of Viman Nagar and Vishrantwadi.
- The work hubs in Kharadi, Viman Nagar, Kalyani Nagar and Yerwada are conveniently accessible.
- One can find the best of schools and hospitals, in and around Dhanori.
- Be it shopping or entertainment centres, never be far from them.
- Enjoy an excellent social infra and a modern-day lifestyle at a lucrative price.



LIVE CONNECTED TO THE BEST OF EVERYTHING

KEY DISTANCES

WORK HUBS

- VIMAN NAGAR - 8.2 km
- Giga Space: 9.3 km
- Solitaire Business Hub - 8.8 km

KALYANI NAGAR - 11.3 km

- Cerebrum IT Park: 12 km
- Cybage: 11.9 km

KHARADI - 12.7 km

- EON IT Park: 13.1 km
- World Trade Centre: 12.9 km
- Barclays: 12.3 km
- UBS: 13.4 km
- Zensar: 14.2 km

YERAWADA: 9.9 km

- Commerzone: 8.6 km
- Business Bay: 10.7 km
- Muttha Towers: 10.4 km

SCHOOLS AND COLLEGES

- Dr. Mar Theophilus School - 1.8 km
- Dr. DY Patil Technical Campus - 3 km
- Symbiosis School for Liberal Arts - 6.4 km
- Symbiosis Centre for Management Studies - 7.9 km
- Daulatrao Jadhav Jail Officers Training College - 8.7 km

HEALTHCARE

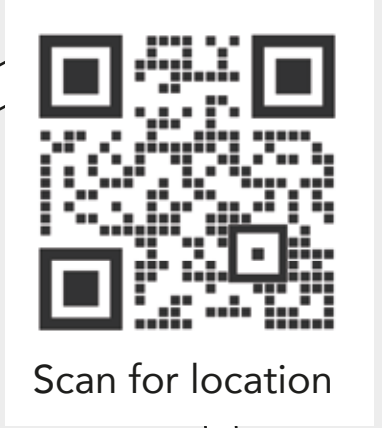
- CT Nursing Home - 3.1 km
- Dhanwantri Hospital - 5.4 km
- Orchid Hospital - 1.8 km
- Sahyadri Hospital - 9.5 km

SHOPPING AND ENTERTAINMENT

- Goodwill Square - 2.6 km
- Phoenix Marketcity - 9.4 km

TRANSPORTATION INFRA

- Ramwadi Metro Station (upcoming) - 8.9 km
- Pune International Airport - 6 km
- Pune Railway Station - 13.2 km



Scan for location



REKINDLE EVERYDAY LIVING

Breathe a new life into your routine with a plethora of lifestyle features. From the young ones to the seniors, each one of them can look forward to liven up every single moment.



FITNESS AND
WELLNESS ZONES



GAME
ZONES



BONDING
ZONES



OTHER
ZONES



FITNESS AND
WELLNESS ZONES



Semi-Olympic Length Swimming Pool



Kids' Pool



Yoga and Meditation Court



Gym



Multipurpose Sports Court



Sports Pavilion



GAME ZONES



Outdoor Board Games



Kids' Play Area with Play Equipment



Indoor Games Area with Table Tennis, Pool Table and Foosball



BONDING ZONES



Barbeque Area with Alfresco Dining



Multipurpose Hall



Party Lawn



Senior Citizens' Area with Reflexology Paving and Tree Covered Sit-out



OTHER ZONES



Co-work Spaces



Creche with Learning and Play Equipment



Pool Deck with Large Tree Canopy

-----18M WIDE ROAD-----

-----30M WIDE ROAD-----

ENTRY/
EXIT

ENTRY/
EXIT

D
UG+LG+9

C
B+UG+LG+9

B
B+UG+LG+9

E
LG+UG+9

F
B+UG+LG+9

A
B+UG+LG+9

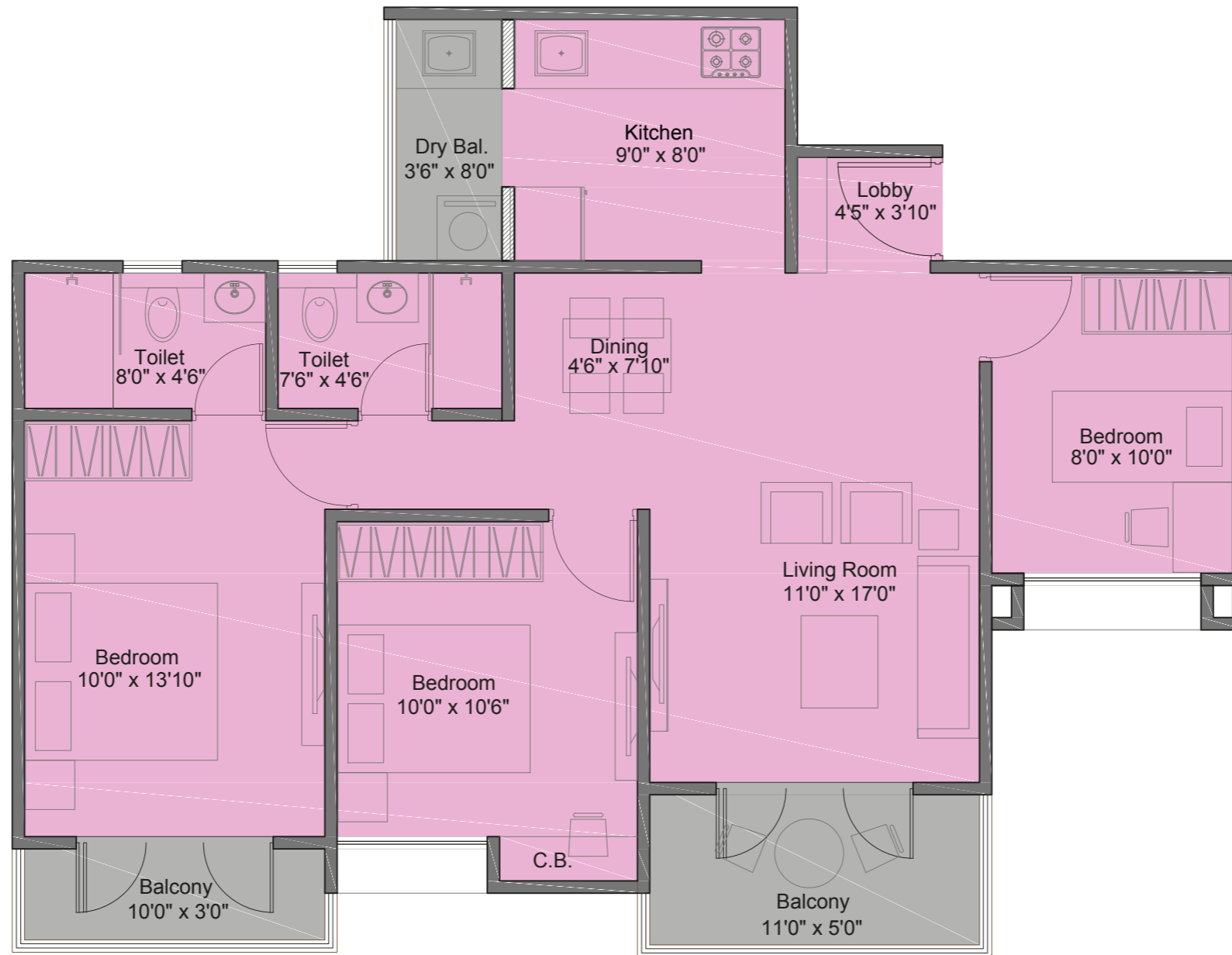




2 BHK

TYPE	CARPET AREA		BALCONY (EXCLUSIVE)		BALCONY DRY (EXCLUSIVE)		TOTAL AREA	
	Sqmt.	Sqft.	Sqmt.	Sqft.	Sqmt.	Sqft.	Sqmt.	Sqft.
TYPE-C 2BHK	63.24	680.72	7.93	85.36	2.63	28.31	74.00	794.00

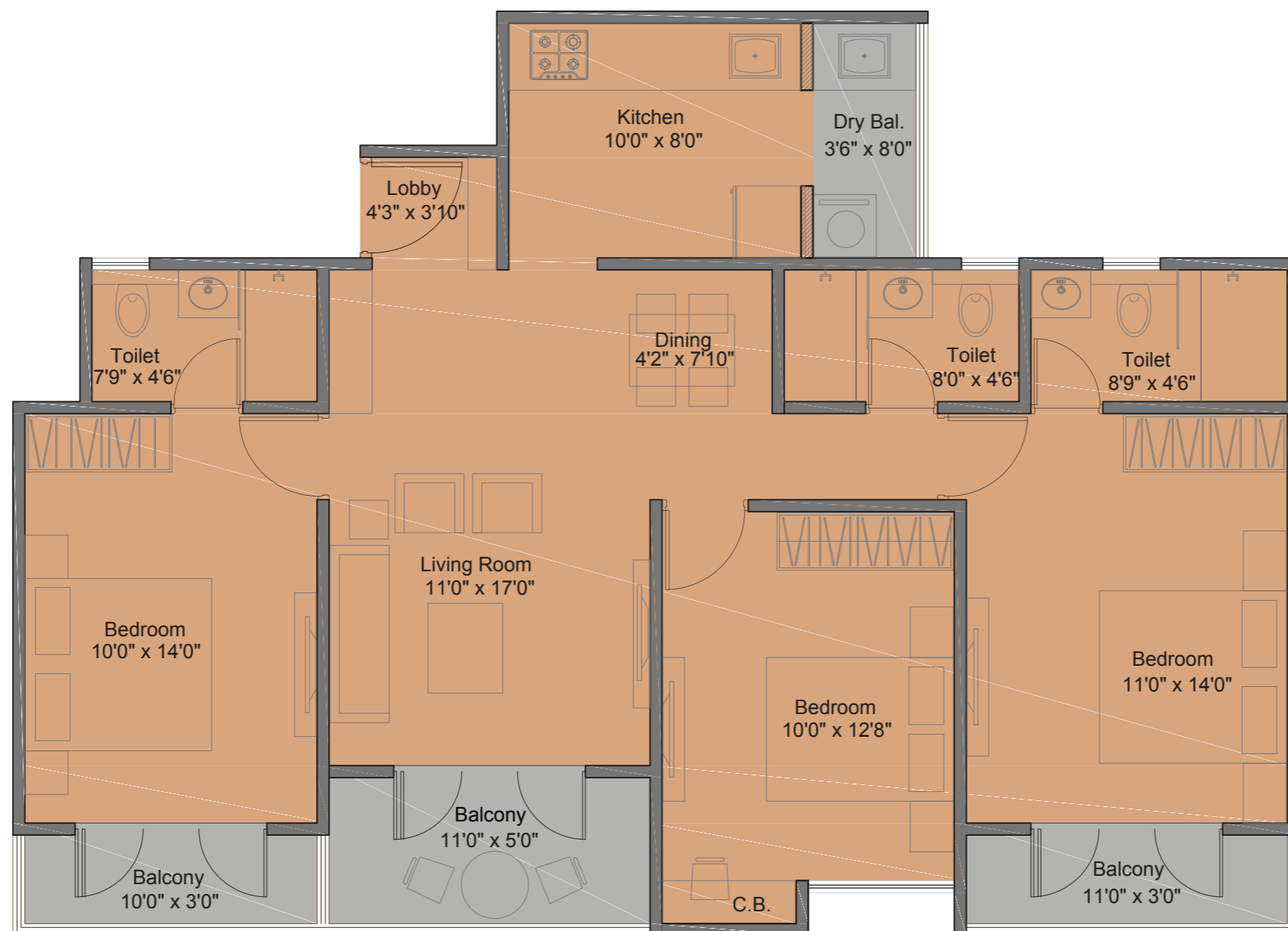
C.B.-CUB BOARD WIDTH 450MM.



3 BHK (PREMIUM)

TYPE	CARPET AREA		BALCONY (EXCLUSIVE)		BALCONY DRY (EXCLUSIVE)		TOTAL AREA	
	Sqmt.	Sqft.	Sqmt.	Sqft.	Sqmt.	Sqft.	Sqmt.	Sqft.
TYPE-B 2.5BHK-B	72.43	779.64	7.93	85.36	2.63	28.31	83.00	893.00

C.B.-CUB BOARD WIDTH 450MM.



3 BHK (LUXURY)

TYPE	CARPET AREA		BALCONY (EXCLUSIVE)		BALCONY DRY (EXCLUSIVE)		TOTAL AREA	
	Sqmt.	Sqft.	Sqmt.	Sqft.	Sqmt.	Sqft.	Sqmt.	Sqft.
TYPE-C Large 3BHK	87.04	936.90	11.14	119.91	2.63	28.31	101.00	1085.00

C.B.-CUB BOARD WIDTH 450MM.

OWN THE JEWEL BEFORE ANYONE ELSE

Sr. No.	Type	RERA Carpet (sq. ft.)	Max Price
1	2 BHK	733-794	58.50 lacs*
2	3 BHK (Premium)	849-893	66.5 lacs*
3	3 BHK (Luxury)	999-1085	86.5 lacs*

Above price is the maximum selling price, inclusive of all taxes. The price doesn't include Society Maintenance charges. Special Pre-launch price for First 72 units only.

Book a token to avail the special pre-launch offer.

GET THE PRE-LAUNCH ADVANTAGE WITH A TOKEN

Sr. No.	Type of Token	Token Amount	Refundable	Benefit
1	Platinum Token	₹1,50,000	No	<ul style="list-style-type: none">• Special price advantage• Spot allotment of choice of apartment• Platinum token benefit
2	Golden Token	₹51,000	Yes	Gold token benefit



Site Address: Sr. No. 9, Village: Dhanori, Taluka: Haveli,
Pune - 411 015.
Call: 020 6764 1837 | www.kohinoorpune.com



Scan for location



MahaRERA No: P52100032086
<https://maharera.mahaonline.gov.in>